

Jetplex Circle Business Park

115 JETPLEX CIRCLE

Madison, AL 35758

Building is 100% Occupied with 1 Tenant

- 29,700 Total SF
- Metal Building
- Built 1986-1987
- Fully Sprinklered
- Approximately 9.5% of the Total Space is Conditioned
- Fully Paved and Lighted Parking, Driveways and Courtyards

Office Area

- 2,830 SF
- Fully Conditioned
- Glass Store Front
- Breakroom
- Conference Room
- 7 Offices
- 2 Handicapped Bathrooms

Warehouse

- 26,870 SF
- 5 Dock-high Doors
- 1 Fork-lift Ramp and Door
- 1 Drive-in Ramp and Door
- Heated Warehouse
- 20' Clear Ceiling Height



Convenient Location Near:

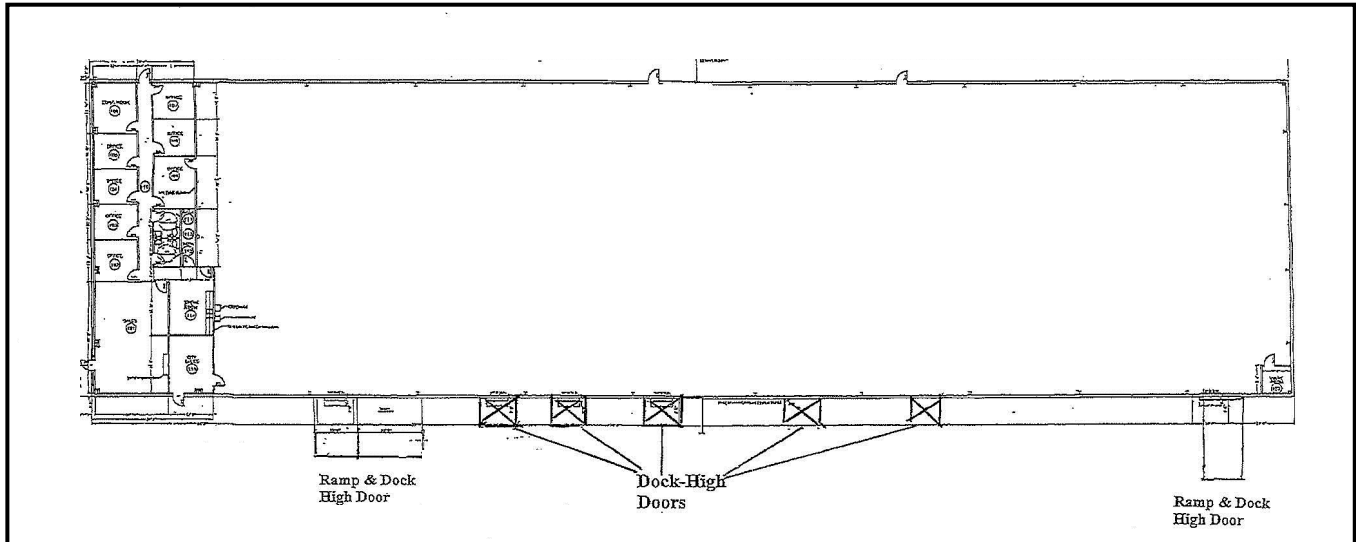
- I-565
- I-65
- Huntsville International Airport
- FedEx Air and Ground
- Toyota/Mazda & Polaris

MAL CLISSOLD
Office: 615-370-1770
Cell: 615-397-9506
Email: mal@jcbp.com
www.jcbp.com

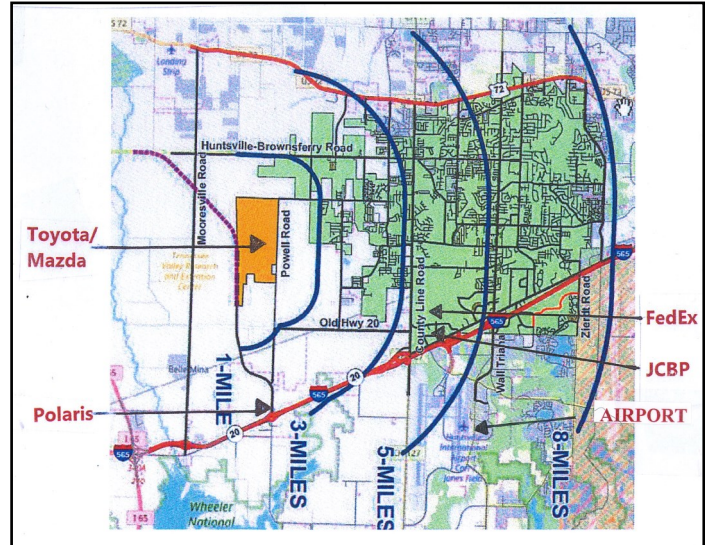


Jetplex Circle Business Park 115 JETPLEX CIRCLE Madison, AL 35758

Building Plan



Located in the Center of
Huntsville's Growth Corridor



Convenient Location Near:

- I-565
- I-65
- Huntsville International Airport
- FedEx Air and Ground
- Toyota/Mazda & Polaris

MAL CLISSOLD
Office: 615-370-1770
Cell: 615-397-9506
Email: mal@jcbp.com
www.jcbp.com

