

Jetplex Circle Business Park

500 PRODUCTION AVENUE

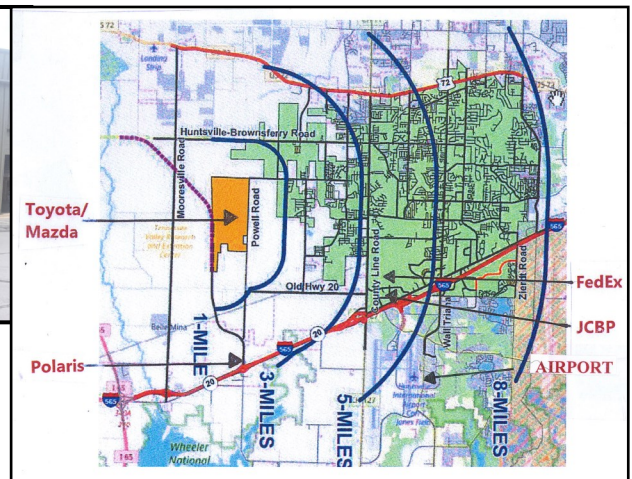
Madison, AL 35758

Building is 100% Occupied with 4 Tenants

- 42,500 SF
- Metal Building Construction
- Acquired in 2006
- Not Sprinklered
- Building is 425' long x 100' wide
- Mostly Paved and Lighted Parking, Driveways and Courtyards
- Huge Front Parking and Large Rear Courtyard
- Site is 7.49 Acres; Building Occupies 13%
- Approximately 56% of Space is Climate Controlled
- All Offices are Built-out to Tenant Needs
- All Spaces have Bathrooms
- 20' Clear Ceiling Height
- Each Bay has 2 Dock-high Doors Serving the Rear Courtyard
- Each Bay has One Drive-in Door to the Front Parking Area
- All Warehouse Areas are Heated
- Suite 600 Is Air Conditioned
- Suite 800 has Fenced Exterior Storage



Located in the Center of
Huntsville's Growth Corridor



Convenient Location Near:

- I-565
- I-65
- Huntsville International Airport
- FedEx Air and Ground
- Toyota/Mazda & Polaris

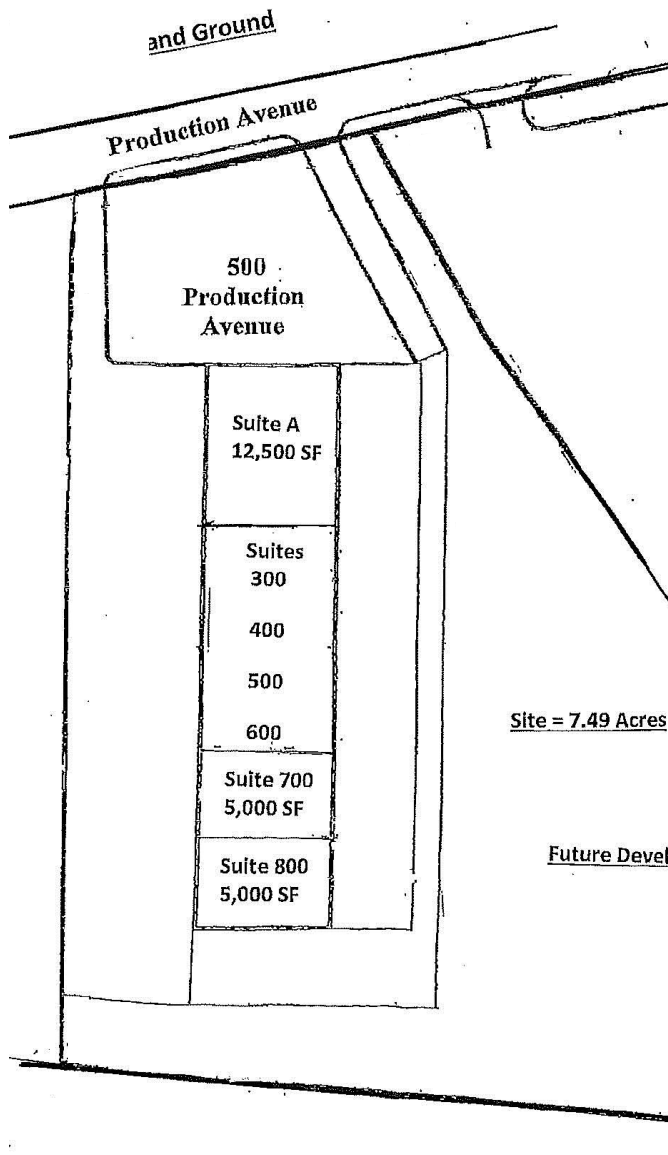
MAL CLISSOLD
 Office: 615-370-1770
 Cell: 615-397-9506
 Email: mal@jcbp.com
 www.jcbp.com



Jetplex Circle Business Park

500 PRODUCTION AVENUE

Madison, AL 35758



Suite	Total	Square Feet		
		Office	WH	% Office
1	10,800	2,800	8,000	25.9%
4	5,400	900	4,500	16.7%
7	5,400	1,240	4,160	23.0%
9	2,700	0	2,700	0.0%
10	2,700	720	1,980	26.7%
11	3,600	1,080	2,520	55.6%
30,600		6,740	23,860	25.0%

MAL CLISSOLD
 Office: 615-370-1770
 Cell: 615-397-9506
 Email: mal@jcbp.com
 www.jcbp.com

Convenient Location Near:

- I-565
- I-65
- Huntsville International Airport
- FedEx Air and Ground
- Toyota/Mazda & Polaris

